



1st FLOOR S:1/100



2st FLOOR S:1/100

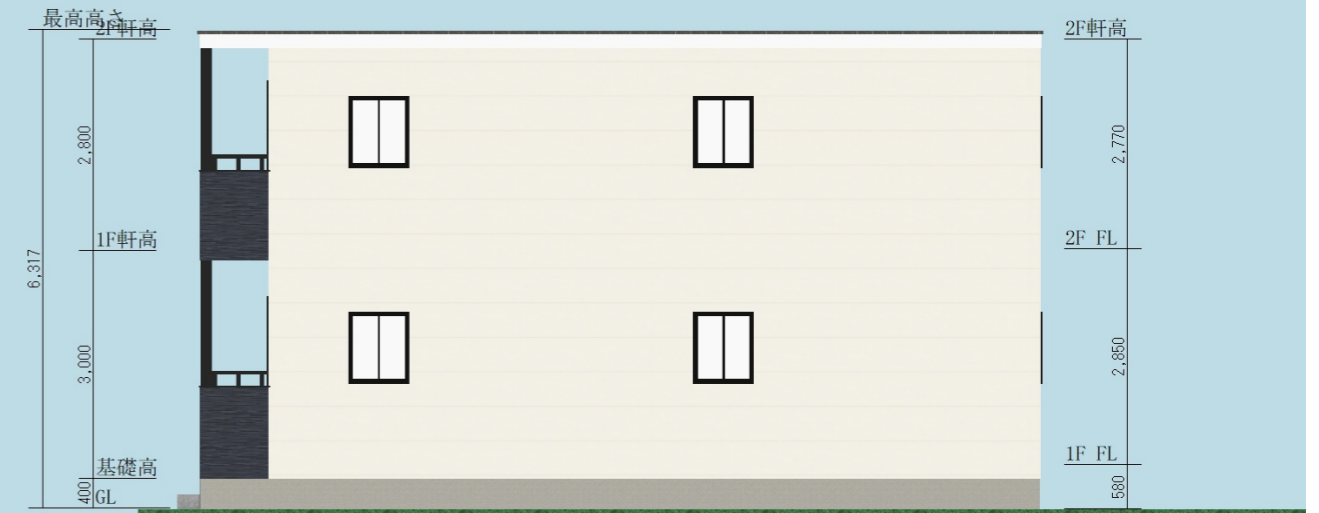


棟面積表

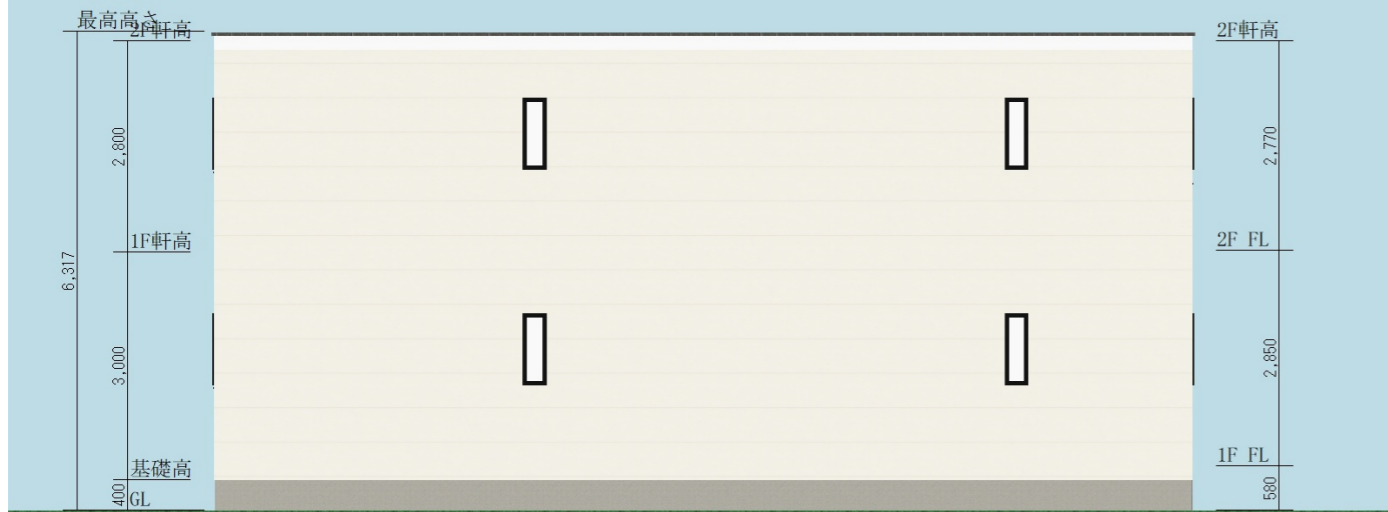
	面積[m ² (坪)]
敷地面積	1726.84 (522.37)
建築面積	114.28 (34.57)
1階床面積	114.28 (34.57)
2階床面積	114.28 (34.57)
延床面積	228.56 (69.14)



SOUTH S:1/100



EAST S:1/100



NORTH S:1/100



WEST S:1/100

