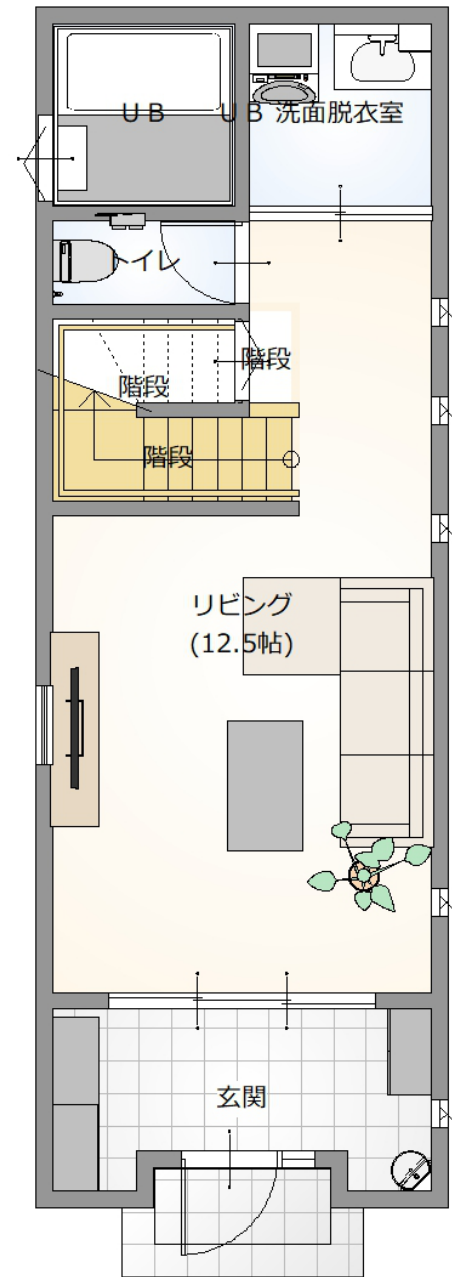


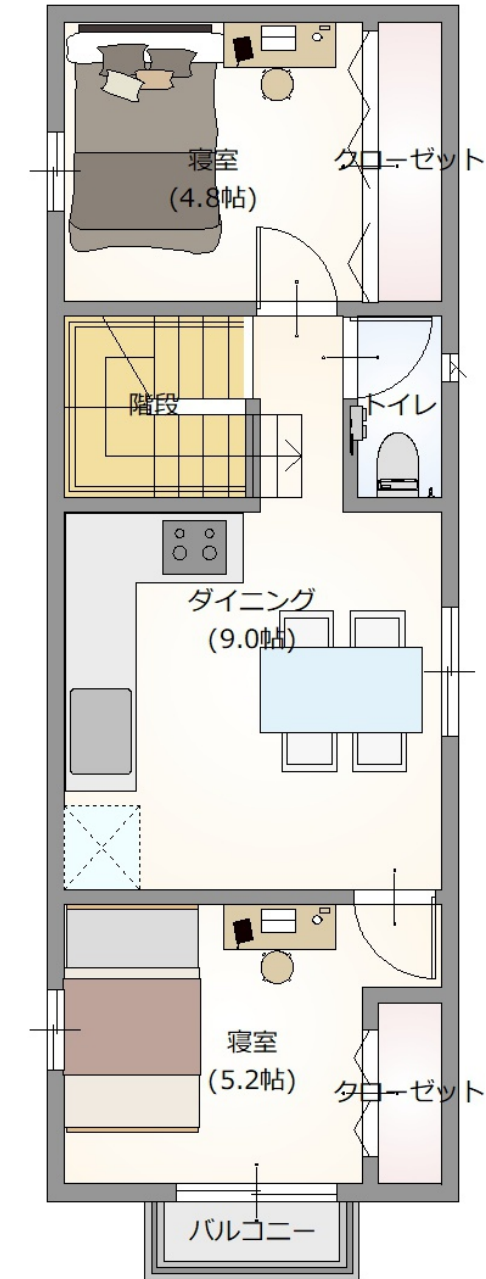


MAIN ANGLE

1st FLOOR S:1/100



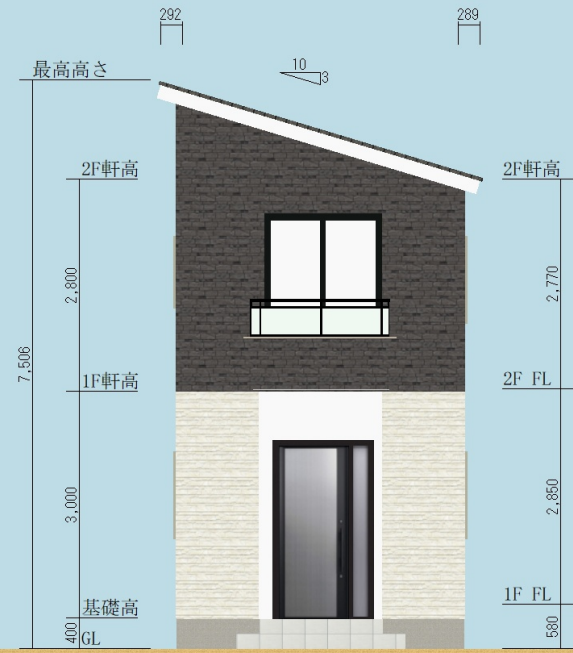
2st FLOOR S:1/100



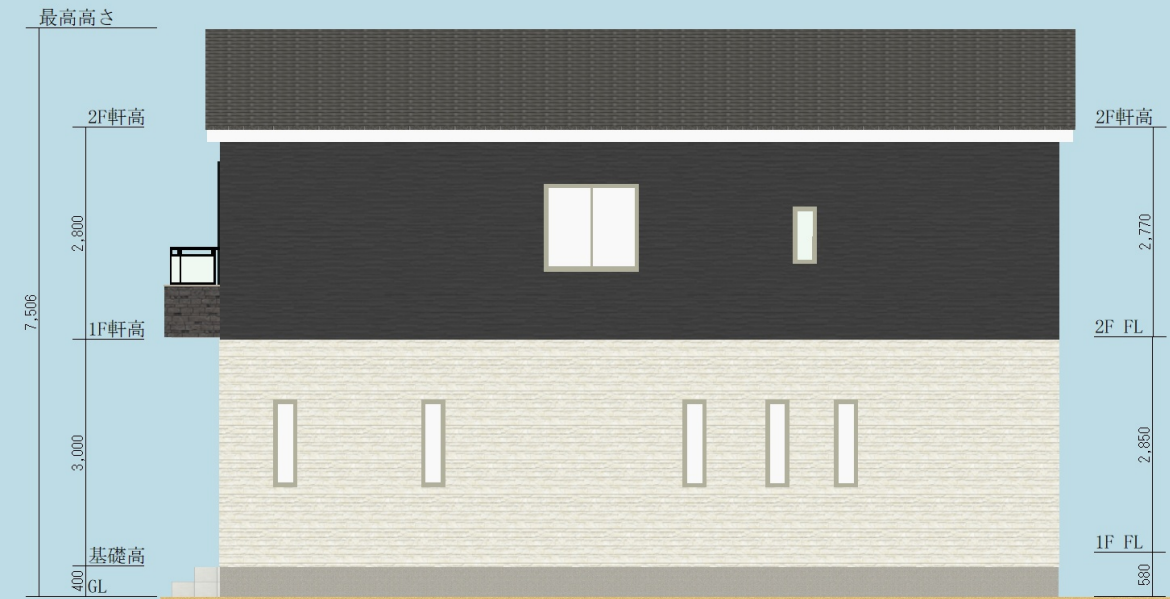
棟面積表

	面積[m ² (坪)]
敷地面積	1304.75 (394.69)
建築面積	39.76 (12.03)
1階床面積	45.72 (13.83)
2階床面積	39.75 (12.02)
延床面積	85.47 (25.85)

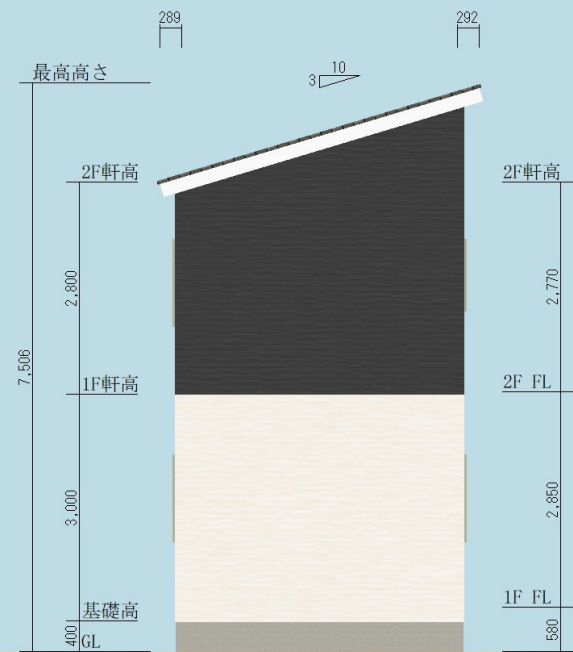
片流れ屋根の2色外観が映える狭小住宅



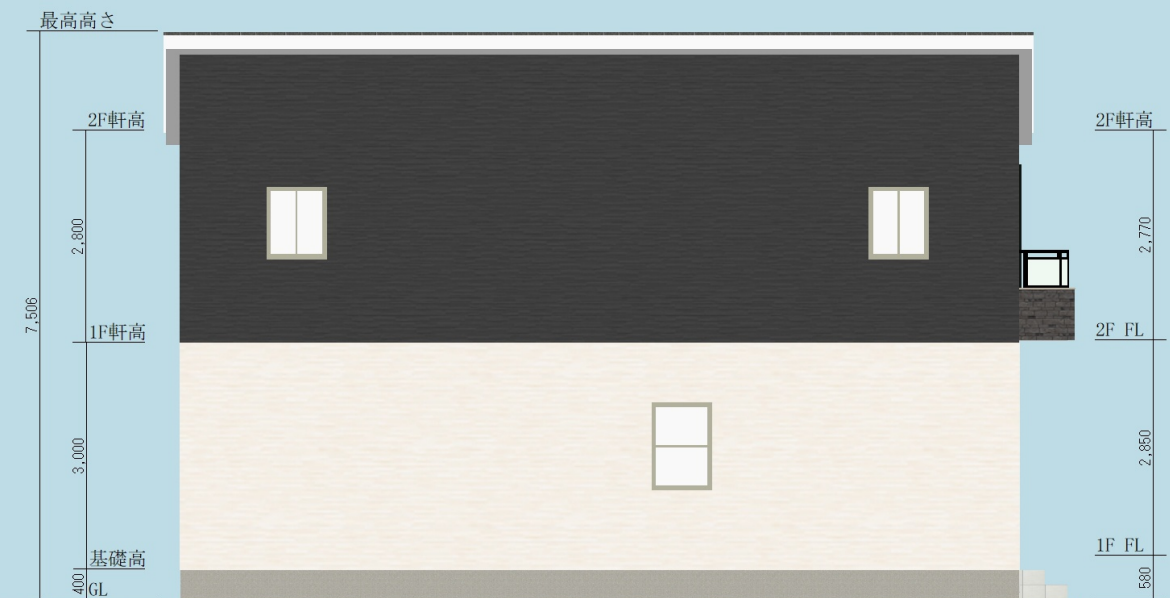
SOUTH S:1/100



EAST S:1/100

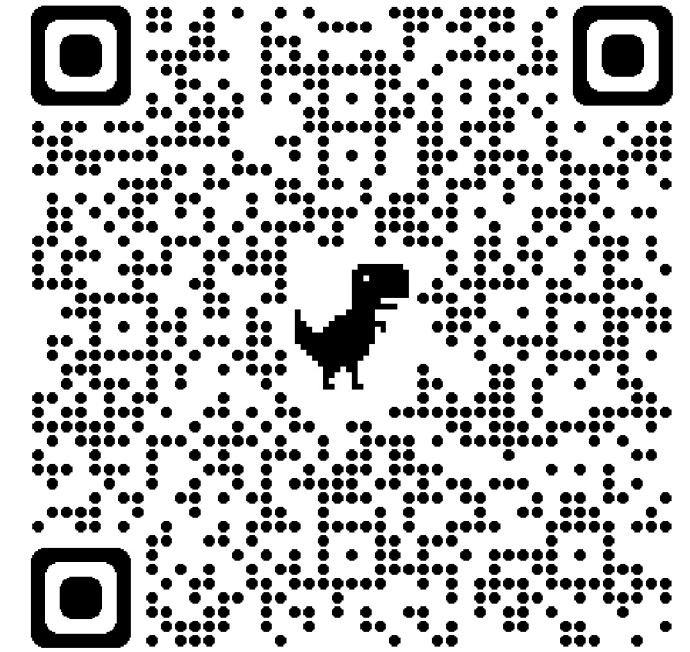


NORTH S:1/100



WEST S:1/100

片流れ屋根の2色外観が映える狭小住宅



INTERIOR DESIGN



INTERIOR IMAGE

株式会社武蔵ホーム

